

# MH1200 Series

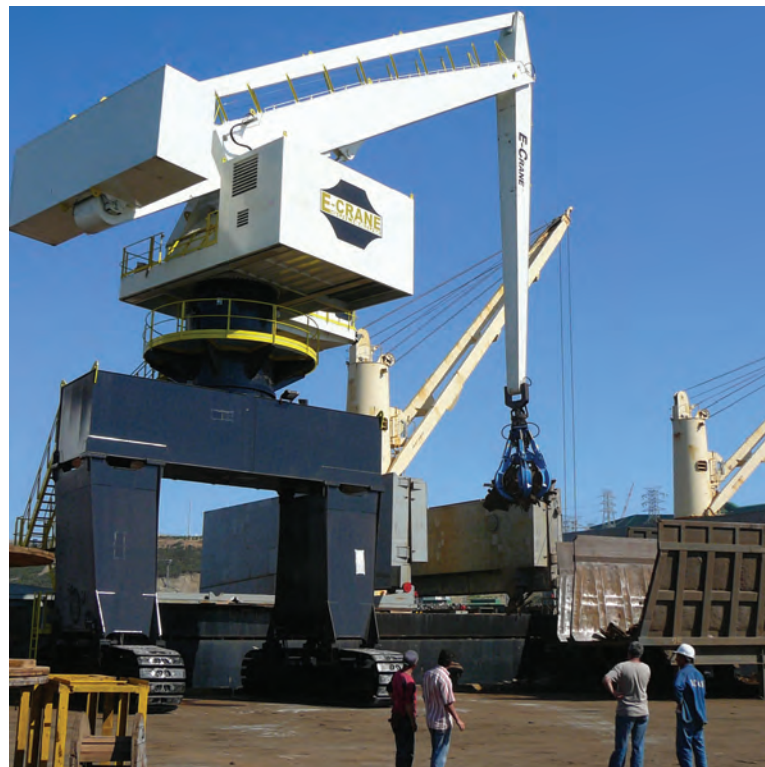
Material Handling Solutions

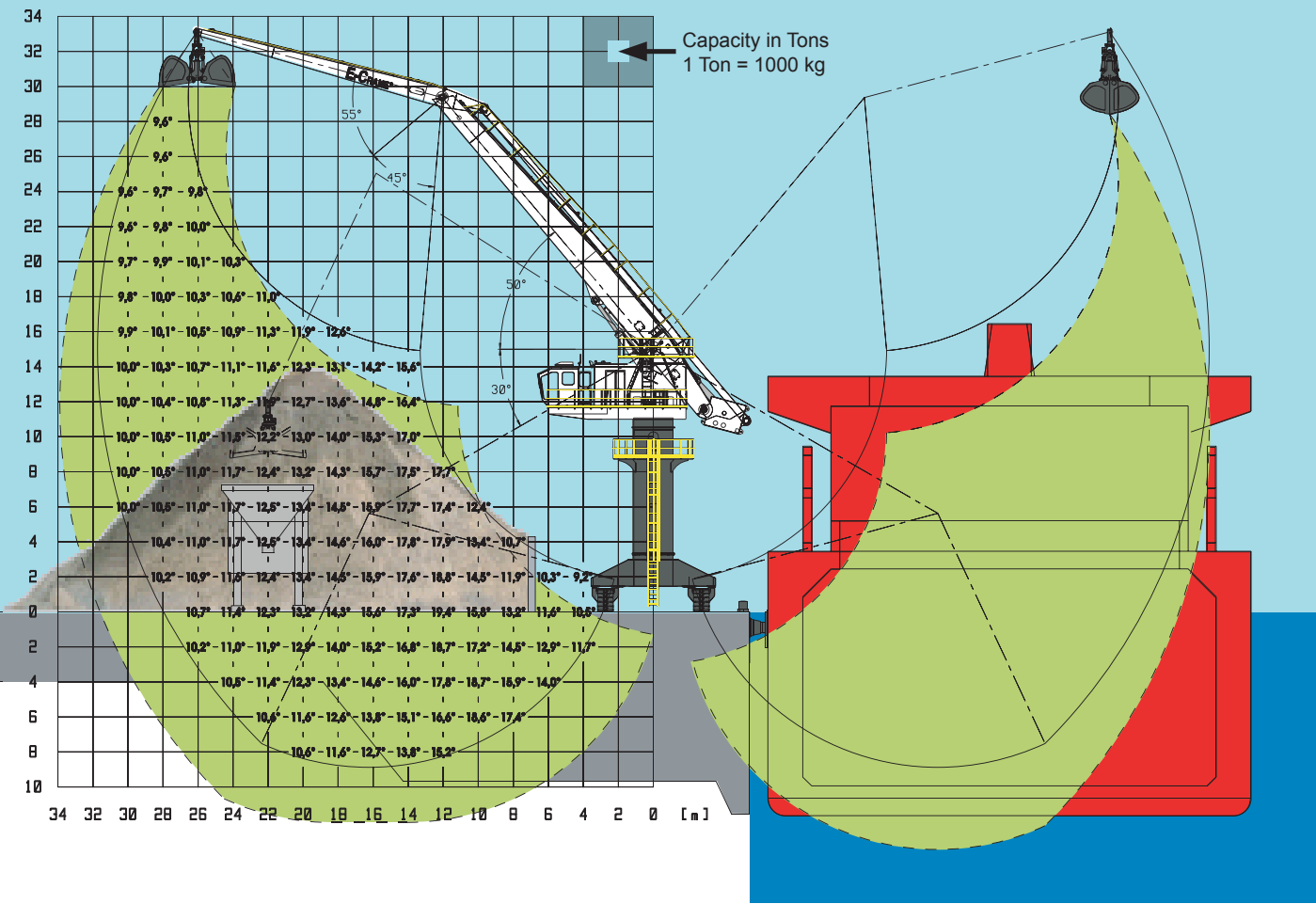
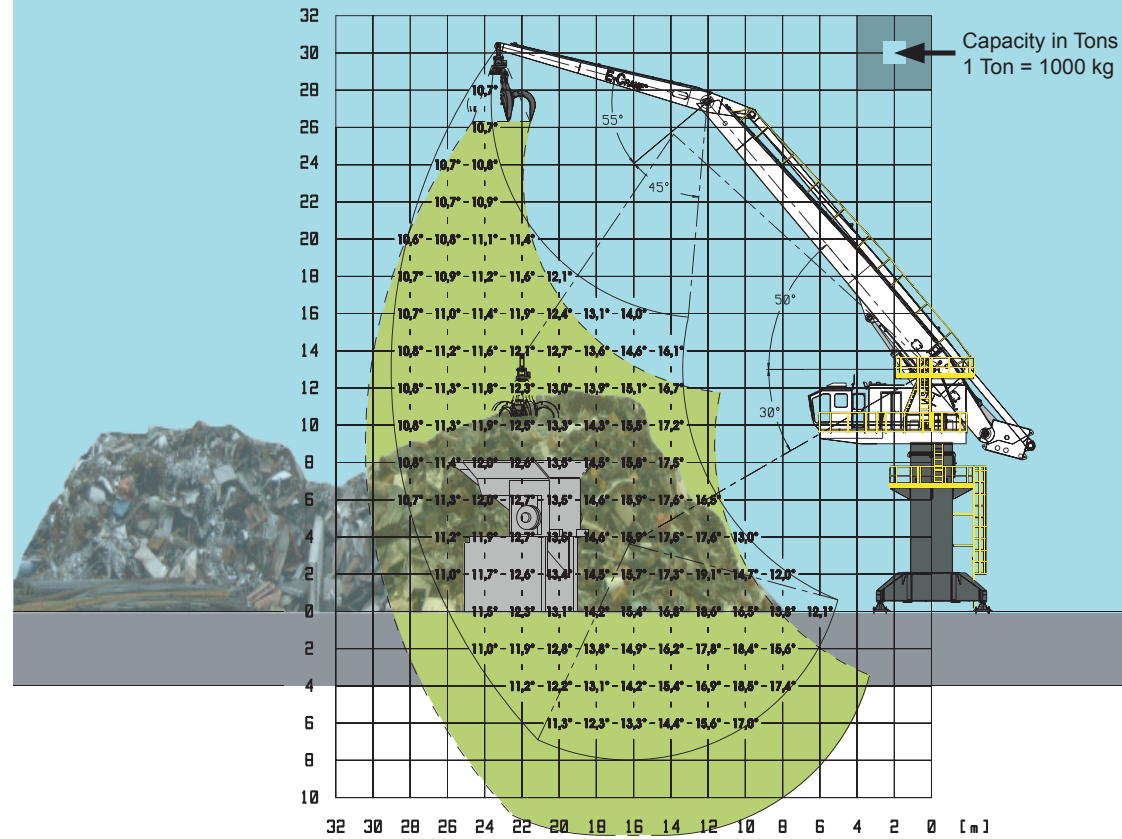


140 - 175 Ton



160 kW / 200 hp





## TECHNICAL DATA

### Typical Dimensions

Stick length: ..... 11,6m  
 Boom length: ..... 18,75m  
 Main Pivot Point (above GND): ..... 13m  
 Max. Outreach: ..... 29,050m  
 Downreach Range (below GND): ..... 7,975m  
 Lift Range (Vertical): ..... 30,366m

### Weight

Total Weight with Standard Equipment:

Model MH11290PD-E: ..... 138.500 kg  
 Model MH11290CR-D: ..... 166.500 kg

### Installed Power

Main Electrical Motor: ..... 160 kW  
 Diesel Generator Set: ..... 360 kVA  
 (for Crawler mounted Material Handlers only)



## TECHNICAL DATA

### Typical Dimensions

Stick length: ..... 14,5m  
 Boom length: ..... 18,75m  
 Main Pivot Point (above GND): ..... 15m  
 Max. Outreach: ..... 31,737m  
 Downreach Range (below GND): ..... 8,875m  
 Lift Range (Vertical): ..... 33,116m

### Weight

Total Weight with Standard Equipment:

Model MH10317PD-E: ..... 144.500 kg  
 Model MH10317CR-D: ..... 173.000 kg

### Installed Power

Main Electrical Motor: ..... 160 kW  
 Diesel Generator Set: ..... 360 kVA  
 (for Crawler mounted Material Handlers only)



# Technical Data



## E lectric Motor

**The clean power solution.**

Rating \_\_\_\_\_ 160 kW @ 1.500 rpm (400VAC/50Hz)  
 Type \_\_\_\_\_ Squirrel Cage Electric Motor  
 Starting Method \_\_\_\_\_ Soft Starter



## Diesel Generator Set

**For crawler mounted Material Handlers only.**

Rating \_\_\_\_\_ 288 kW  
 Fuel Consumption \_\_\_\_\_ 39 l/hr



## Hydraulics

**Powerful hydraulics to maximize performance.**

Main Pump \_\_\_\_\_ 2x Variable Displacement Axial Piston Pump  
 Maximum Flow \_\_\_\_\_ 2x 400 l/min.  
 Maximum Pressure \_\_\_\_\_ 320 bar  
 Swing Pump \_\_\_\_\_ Variable Displacement Axial Piston Pump, Closed-loop  
 Maximum Flow \_\_\_\_\_ 245 l/min.  
 Maximum Pressure \_\_\_\_\_ 280 bar  
 Pilot Pump \_\_\_\_\_ Gear Pump  
 Capacity Hydraulic Tank \_\_\_\_\_ 1.850 l  
 Hydraulic Cylinders \_\_\_\_\_ 2 Identical Cylinders with Safety Valves (Load Holding Valves)  
 Boom & Stick Cylinder \_\_\_\_\_ 1800 x 279 x 178 mm  
 Oil Cooler \_\_\_\_\_ Electric Driven, oversized air-oil cooler  
 Hydraulic Controls \_\_\_\_\_ The high pressure flow sharing control valves provide a load pressure independent flow distribution and are pilot operated for low lever efforts and excellent control.  
 Relief Valves \_\_\_\_\_ All lines include primary and secondary relief valves.  
 Filtration \_\_\_\_\_ For extended operating life of your Material Handler.  
 Pilot Oil Filtration \_\_\_\_\_ 5 microns  
 Return Oil Filtration \_\_\_\_\_ 20 microns  
 Bypass Filtration \_\_\_\_\_ 10 microns  
 Water Separator \_\_\_\_\_ Standard



## Swing System

**Quick, full-powered response.**

Mechanism \_\_\_\_\_ Hydrostatic with planetary reduction  
 Swing Drives \_\_\_\_\_ 2  
 Swing Torque \_\_\_\_\_ 460 kNm  
 Swing Speed \_\_\_\_\_ 0 - 2,24 rpm  
 Parking Brake \_\_\_\_\_ Spring-applied, hydraulically released, multiple-disc brake  
 Slewing Ring \_\_\_\_\_ Three-Row Roller Bearing with Internal Gear



## Upper Revolving Frame

**The "Backbone" of the machine's durability.**

Design \_\_\_\_\_ Rugged box section construction  
 Platforms \_\_\_\_\_ Wide, walk-around access to all system components for easy serviceability and quick daily maintenance checks.

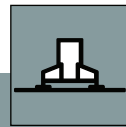
Contact your local dealer for more info



## XL Cab

**Designed for comfort and ease of operation.**

Operator's Station \_\_\_\_\_ Extra height and length for increased operator space.  
 LxWxH \_\_\_\_\_ 2.000 x 1.800 x 2.200 mm  
 Operator's Seat \_\_\_\_\_ Fully adjustable suspension seat includes height and weight adjustments, lumbar support, wide adjustable armrests, ...  
 Hydraulic Activation Control Lever \_\_\_\_\_ Lever deactivates hydraulic functions and helps prevent operation when the operator exits the cab.  
 Air Conditioning \_\_\_\_\_ Standard  
 Radio / CD Player \_\_\_\_\_ Standard  
 Controls \_\_\_\_\_ CAN-based Electronic Machine Manager (EMM). A Full color LCD screen provides the operator with E-Crane operating status, safety systems and records all relevant events during operations.

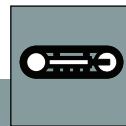


## Free Standing Pedestal

**... offering the most economical solution.**

Outriggers \_\_\_\_\_ 4  
 Footprint \_\_\_\_\_ 6 m x 6 m  
 Pedestal Height and Weight

MH11290 PDE \_\_\_\_\_ 8.600 mm - 24.500 kg  
 MH10317 PDE \_\_\_\_\_ 10.600 mm - 26.500 kg

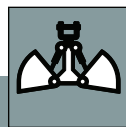


## Crawler Undercarriage

**Durable, maintenance-free and providing excellent stability.**

Center and Track Frame \_\_\_\_\_ Box-section type  
 Drive System \_\_\_\_\_ Hydrostatic  
 Max. Drawbar Pull \_\_\_\_\_ 430 kN  
 Track Shoes \_\_\_\_\_ 900 mm Triple Grouser  
 No. of Shoes each side \_\_\_\_\_ 54  
 No. of Carrier Rollers each side \_\_\_\_\_ 4  
 No. of Track Rollers each side \_\_\_\_\_ 12  
 Track Length (C-C) \_\_\_\_\_ 5.540 mm  
 Track Gauge \_\_\_\_\_ 5.500 mm  
 Undercarriage Height and Weight

MH11290 PDE \_\_\_\_\_ 8.600 mm - 52.500 kg  
 MH10317 PDE \_\_\_\_\_ 10.600 mm - 55.000 kg



## Attachments

**The right tool for the right job.**

E-Crane® offers a wide variety of attachments: clamshell and orange peel grabs, hooks, grab rotators, quick change devices, ...

**..., Longer Reach,  
 Higher Efficiency,  
 Unprecedented Life.**

E-Crane International USA  
 Phone: +1(419)468-0090  
 Web: <http://www.e-crane-usa.com>

E-Crane International Europe  
 Phone: +31(0)165-320100  
 Web: <http://www.e-crane.eu>

©2009 E-Crane Worldwide / Indusign. All rights reserved. All technical specifications are subject to change without prior notice and without incurring responsibility for material handlers previously sold! Changes, errors and misprints reserved.

**E-CRANE MH1200 Series**  
 Material Handling Solutions